



ipgroup

www.ipgroupplc.com
Stock code (LSE): IPO

Evolving GREAT IDEAS into WORLD-CHANGING businesses

A GLOBAL LEADER IN IP COMMERCIALISATION

IP Group was set up with a mission to evolve great ideas, mainly from our partner universities, into world-changing businesses. We achieve this by systematically helping to create, build and support outstanding intellectual property-based companies.

The group pioneered the concept of the long-term partnership model with UK universities and has spent many years honing a unique approach to building businesses and providing support along the journey from 'cradle to maturity'. We have replicated this approach with a select group of US institutions and, in 2017, the Group announced it was expanding to Australasia.

IP GROUP plc EXECUTIVE DIRECTORS



Alan Aubrey
Chief Executive Officer



Greg Smith
Chief Financial Officer



David Baynes
Chief Operating Officer



Mike Townend
Chief Investment Officer

IP GROUP plc NON-EXECUTIVE DIRECTORS



Mike Humphrey
Non-executive Chairman



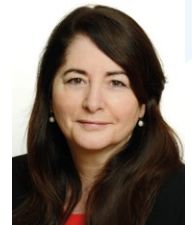
Prof David Begg
Senior Independent Director



Jonathan Brooks
Non-executive Director



Prof Lynn Gladden, CBE
Non-executive Director



Dr Elaine Sullivan
Non-executive Director

OUR STRATEGIC AIMS



To **create** and maintain a pipeline of compelling intellectual property-based opportunities



To **develop** and support these opportunities into a diversified portfolio of robust businesses



To **deliver** attractive financial returns on our assets and third party funds

WE SUPPORT OUR PORTFOLIO COMPANIES WITH:

Primary interface between the Group and the universities.

ippartners

Specialist early-stage in-house executive search.

ipexec

Operational, legal and business support.

ipassist
iplegal

Specialist fund management and corporate advisory business.

ipcapital

Innovative programmes to accelerate company growth.

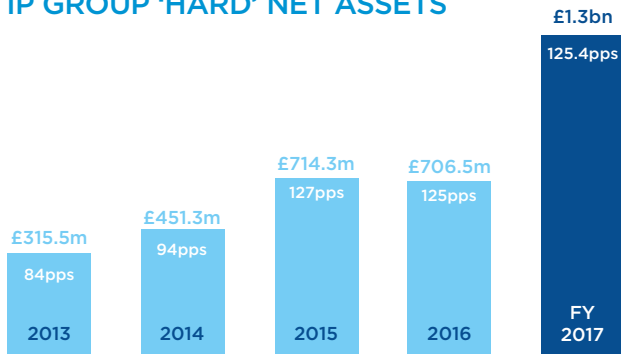
ipimpact

PASSIONATE + PIONEERING + PRINCIPLED

IP GROUP AT A GLANCE

IP GROUP 'HARD' NET ASSETS*

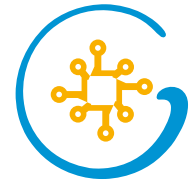
www.ipgroupplc.com
Stock code (LSE): IPO



*Hard NAV represents total equity/net assets less goodwill, intangible assets and the Oxford Equity Rights asset



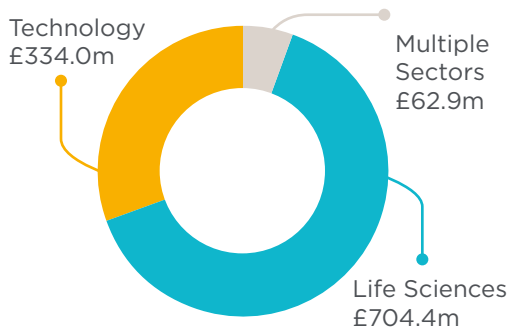
life sciences



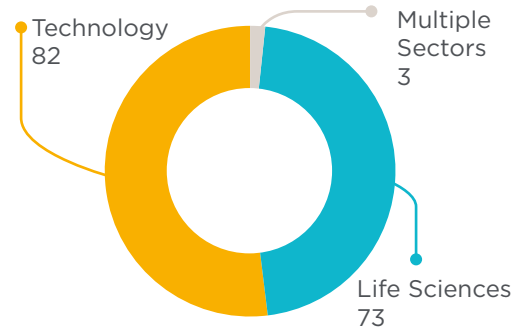
technology

PORTFOLIO "THE IDEAS WE BACK AIM TO CHANGE AND POSITIVELY IMPACT THE WORLD"

By fair value*



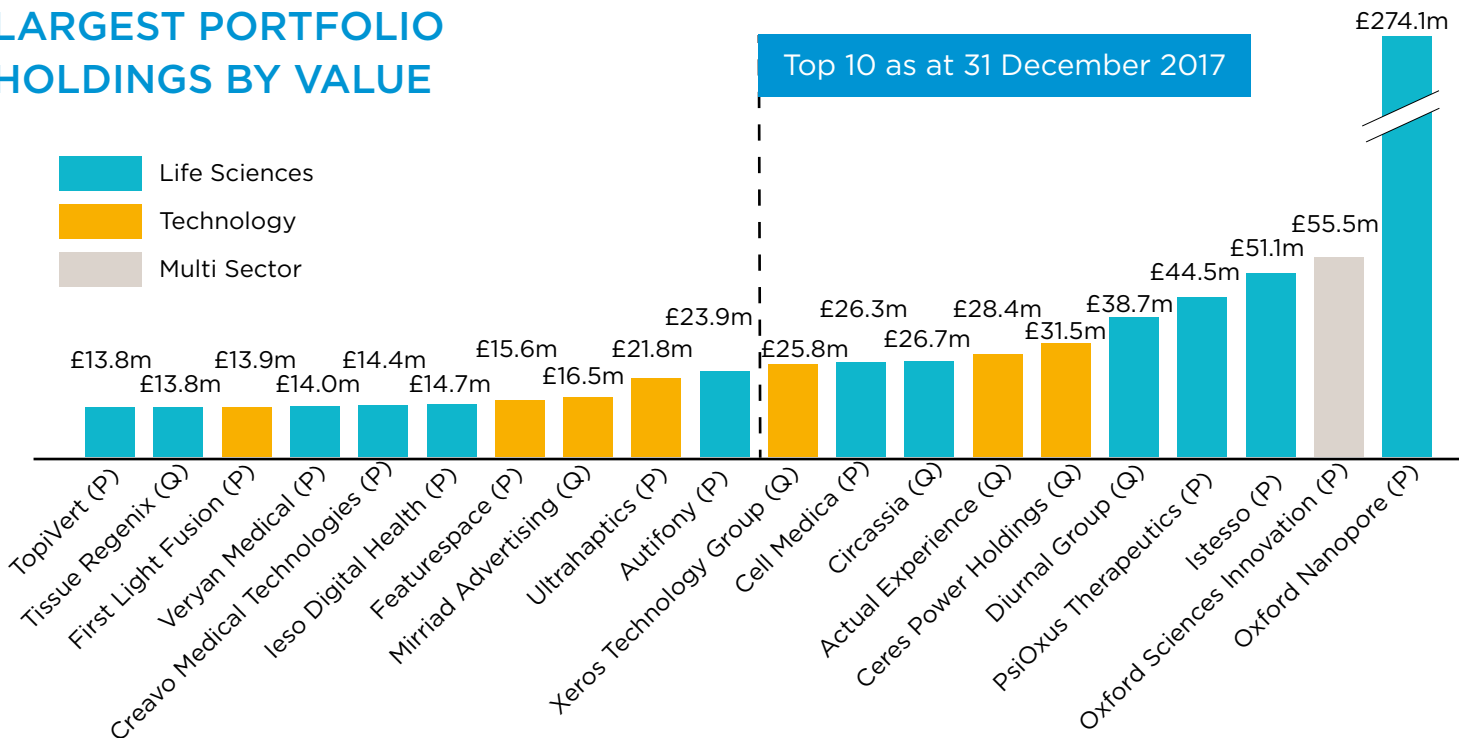
By number of companies*



*Excludes de minimis & organic holdings

*31st December 2017

LARGEST PORTFOLIO HOLDINGS BY VALUE



PASSIONATE + PIONEERING + PRINCIPLED